



Experience the Devine Abode



TMR
Kshethram
@ YADAGIRIGUTTA



The Company :

TMR GROUP has more than a decade and half of rich experience in the real estate industry under the dynamic and expert guidance of its managing director and its young team. Successfully launched and completed many Residential Open Plot Ventures in Kothur, Shadnagar, Shameerpet, Toopran, Nandigama etc. TMR Group ensures 100% Legally verified documentation. Projects with clear title on Company name, and all necessary approvals from the respective Government Departments. With this very same commitment we present to you our new project “**TMR KSHETHRAM**” @ Yadagirigutta.



The Project :

“**TMR KSHETHRAM**” @ Yadagirigutta is a DTCP approved Residential Open Plot Venture, with a state-of-the-art amenities, located adjacent to Hyderabad-Warangal National Highway(NH-163) between Yadadri Temple Arch and Aleru. **TMR KSHETHRAM** is well connected with Hyderabad, Warangal, and Khammam by road and with the Telangana Governments plan& commitment of making YADADRI temple a World Class Pilgrimage, with best Infrastructure facilities.





Location Prospects :

The Real Estate Industry has gained momentum in Yadagiri Gutta and Famous tourist attractions like Bhongir Fort, Kolanupaka Jain Temple and famous pilgrim centre and abode of lord Sri Narasimha Swamy, "YADADRI" (erstwhile known as Yadagirigutta) and with the real estate gaining momentum since last 4 years, "Yadadri Bhuvanagiri District" has been witnessing a sea of change with regard to developments in sectors like Medical, Tourism, Industrial and IT sectors.

- ★ Adjacent to Hyderabad - Warangal National Highway (NH 163)
- ★ Just 7 km (approx.) from Yadadri Temple
- ★ Near to Wangapally MMTS
- ★ Good Road Network & Transport Facility
- ★ Four lane road from Raigiri - Yadagirigutta
- ★ Bhongir - Bibinagar Railway Hub (Cargo & Domestic)
- ★ Near Singapore City, AIIMS, Raheja IT Park, Genpact, Infosys etc.
- ★ Development of Raigiri & Yadagirigutta lakes under Kakatiya Mission
- ★ Very Near to Tourist Places like:

- ✦ Pathagutta
- ✦ Lotus Temple
- ✦ Ayyappa Konda
- ✦ Surendrapuri
- ✦ Panchamukha Hanuman Temple
- ✦ Bhongir Fort
- ✦ Kolanpaka Jain Temple
- ✦ Archaeological Museum



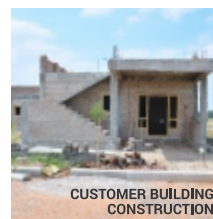
Project Facilities

- ★ DTCP Approved Layout
- ★ Hyderabad & Warangal Highway facing project
- ★ Entrance gate
- ★ 40' and 33' wide roads
- ★ Avenue plantation
- ★ Children's play area
- ★ Electricity and Drainage
- ★ Vaasthu Compliant
- ★ Pollution free zone
- ★ Clear title & immediate registration

PARK/ RECREATION LAWNS



AVENUE PLANTATION

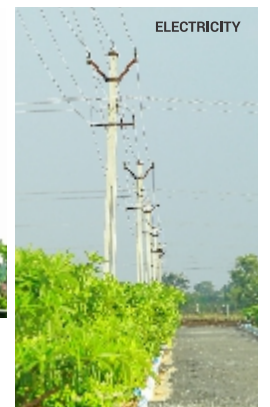


CUSTOMER BUILDING CONSTRUCTION

OVERHEAD WATER TANK



ELECTRICITY



Our previous project images

LOCATION PLAN

Not to Scale



Sridatha Designing & Printing : Ph - 98490 56622

A project by



TMR INFRA PRIVATE LIMITED

Corporate Office:

3rd Floor, 3rd Block, West Wing, White House,
Kundanbagh, Begumpet, HYDERABAD - 500016.

Registered Office:

TMR House, Plot No. 2, Surya Enclave Road,
Trimulgherry, SECUNDERABAD - 500015.

e-mail: info@tmrinfra.com website: www.tmrinfra.com